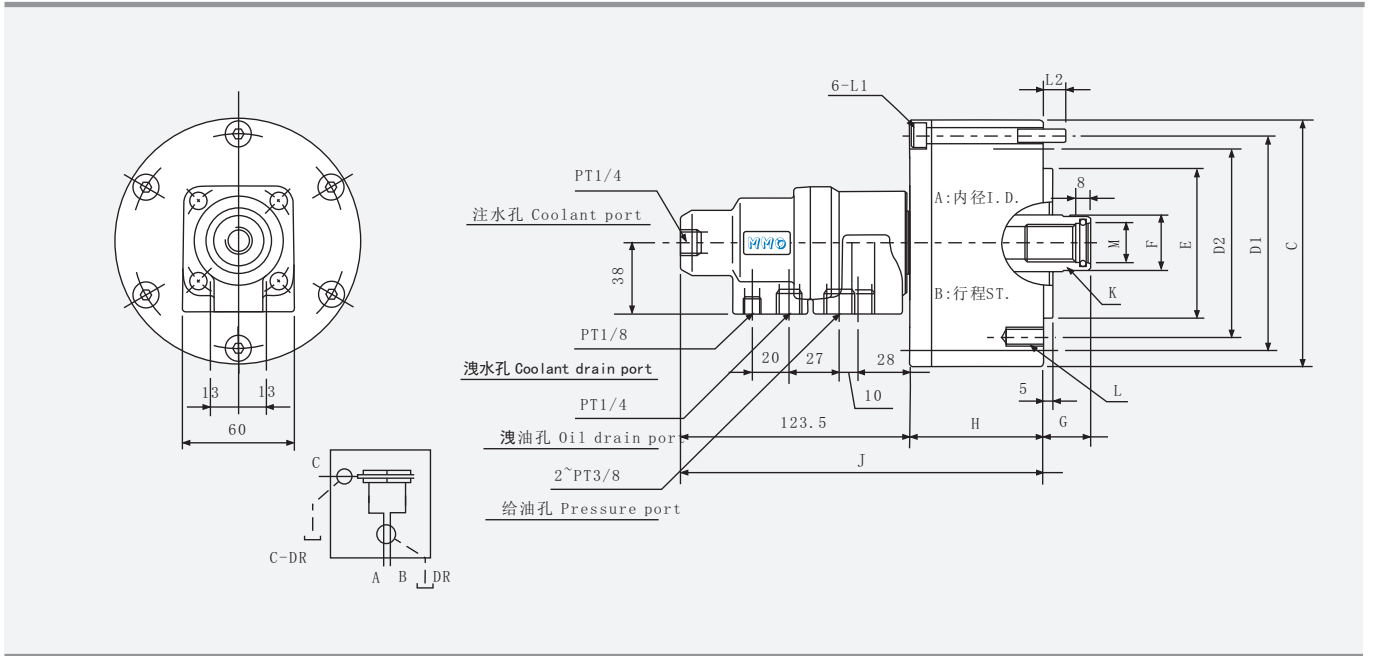
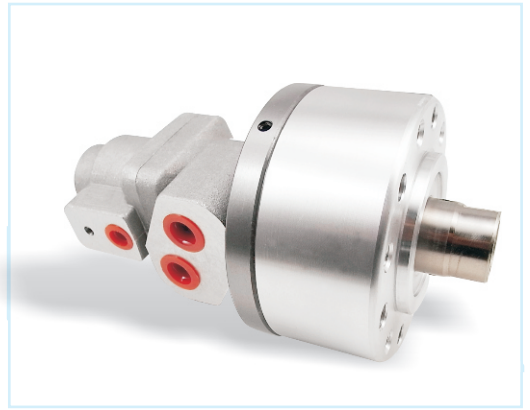


- ✳ 高速，注水型回转油压缸。可经由后端回转接头供给切削水。
安装时可由后端锁固之。
- ✳ 内建逆止阀自锁机构及压力泄压阀。
- ✳ 洩油孔配管务必单独接回油压槽，以避免产生背压。
- ✳ To allow coolant to be feed from the rear end of the distributor through the rotating union.
- ✳ Can screw it from the rear end of the cylinder when mounting.
- ✳ The drain port should be independently connected to oil tank to avoid back pressure.



CYLINDER

規格 Spec 型號 Model	活塞面積 Eff.piston area cm ²		行程 mm Piston stroke	最高使用回轉數r.p.m. Max.speed	最高使用壓力MPa Max.pressure(kgf/cm ²)	注水部最高使用壓力MPa Coolant connection max.pressure(kgf/cm ²)	GD ² kg·m ² Moment of inertia	重量 kg Weight
	押側 Extend	拉側 Retract						
RL-75N	42.6	37.1	15	6000	4.0 (40)	3.5 (35)	0.01	3.0
RL-100N	77.0	71.5	20	6000	4.0 (40)	3.5 (35)	0.04	4.5
RL-125N	121.2	113.1	25	6000	4.0 (40)	3.5 (35)	0.06	7.0
RL-150N	175.2	160.8	30	5500	4.0 (40)	3.5 (35)	0.10	9.6
RL-200N	312.5	290.4	35	5500	4.0 (40)	3.5 (35)	0.29	15.5

寸法 Size 型號 Model	A	B	C	D1	D2	E h7	F	G		H	J	K	L	L1	L2	M H8
								max.	min.							
RL-75N	75	15	107	90	90	65	30	45	30	57	180	M20X35	6~M8X16	M8X60	12	21
RL-100N	100	20	132	115	100	80	30	45	25	72	195	M20X35	6~M10X2	M8X75	12	21
RL-125N	125	25	160	140	130	110	35	50	25	82	205	M24X45	6~M12X20	M8X85	12	25
RL-150N	150	30	190	170	130	110	45	55	25	95	218	M30X45	12~M12X24	M10X100	16	32
RL-200N	200	35	245	220	145	120	55	70	35	115	240	M36X60	12~M16X30	M10X125	21	38